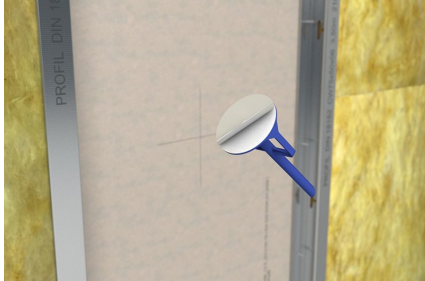


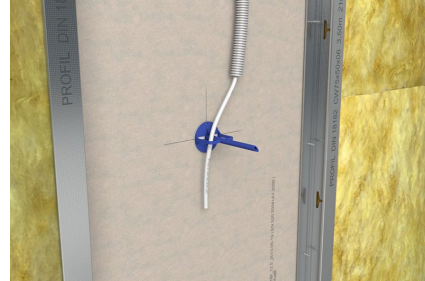
Montageanleitung

P001S

Leitungsträger-Bohrschablonen-Set



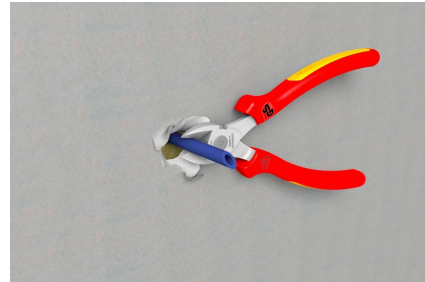
Klebescheibe auf Leitungsträger kleben und Schutzfolie abziehen.



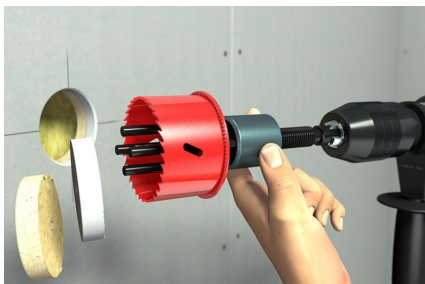
Leitungsträger auf Trockenwand befestigen und Leitungen oder Rohre durch Bügel führen.



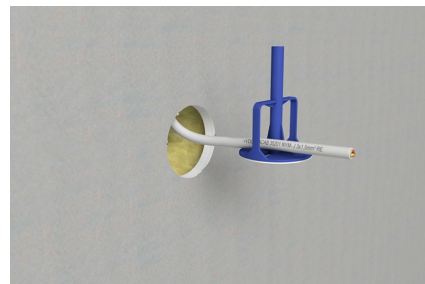
Angeschragten Dorn durch zweite Gipskartonplatte drücken, ggf. vorher mit Hammer Loch einschlagen.



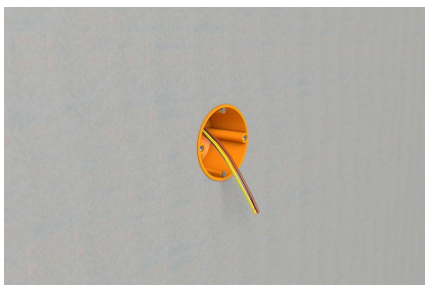
Leitungsträger mit Zange bündig zur Wand abwickeln.



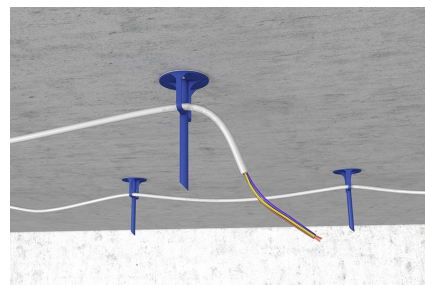
Dosenfräser im Zentrierbohrloch ansetzen und Loch ausfräsen.



Leitungsträger mit befestigten Kabeln oder Rohr aus der Öffnung ziehen.



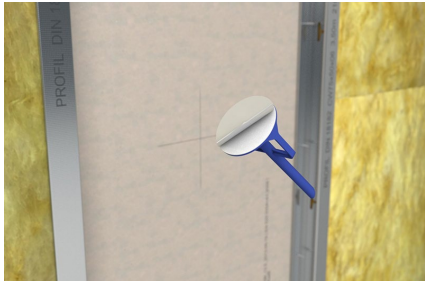
Hohlwanddose montieren, Einbaugerät oder Steckdose installieren.



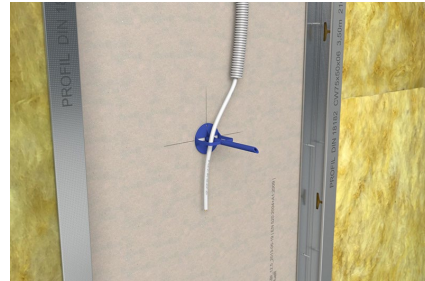
Einfache Deckenmontage zur Leitungsführung: aufkleben und fertig!

Assembly instruction

P001S
Cable holder - Drilling template-Set



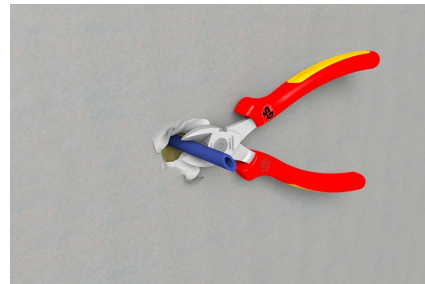
Stick the adhesive disc onto the wall and remove the protective film.



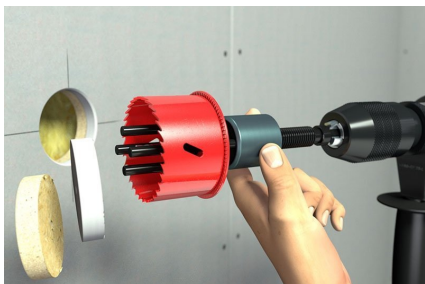
Fasten pipe support to drywall and guide lines or pipes through brackets through brackets.



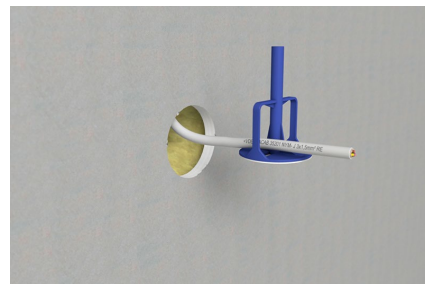
Push beveled mandrel through second plasterboard, if necessary first hammer in hole with hammer.



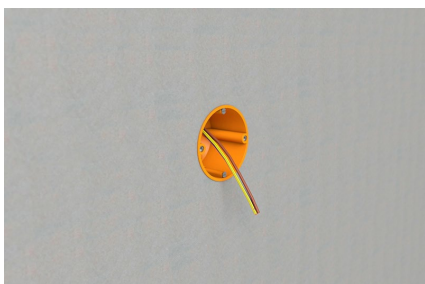
Use pliers to pinch the cable support to the wall.



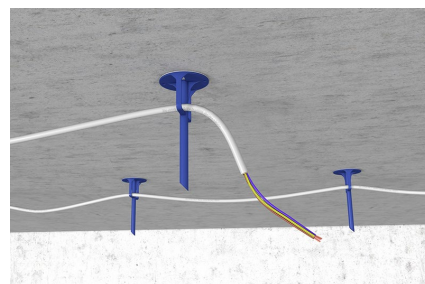
Place the box cutter in the centering hole and mill out the hole.



Cable carrier with attached cables or pipe out of the opening.



Install cavity wall box, install recessed appliance or socket.



Simple ceiling mounting for Cable routing: stick it on and you're done!