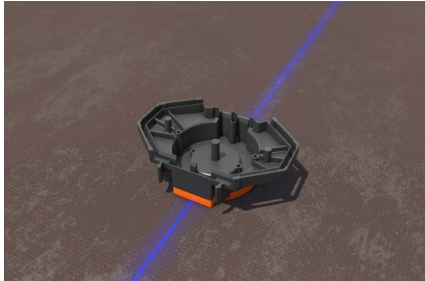
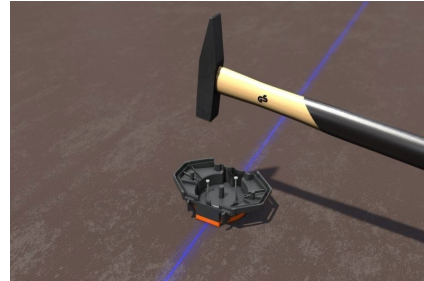


Montageanleitung

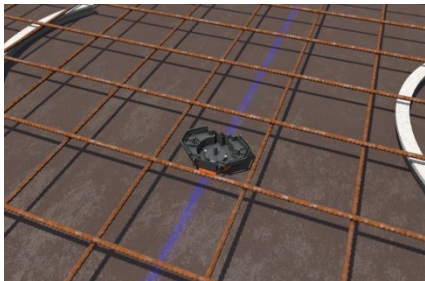
P762 Aufsteckrahmen Membrandose M1



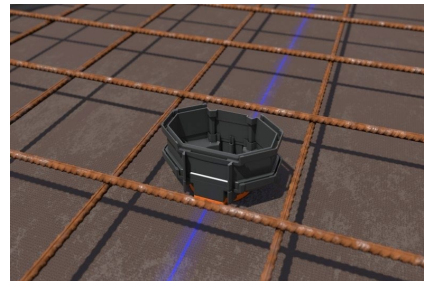
Integrierte Nagelfixierung im Frontteil ermöglicht eine einfache Montage.



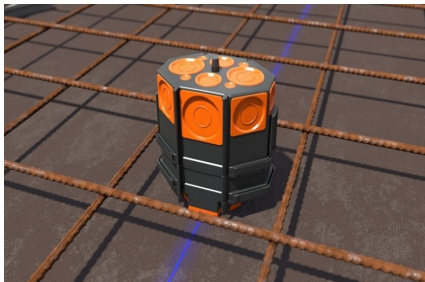
Frontteil mit Nägeln auf der Schalung befestigen.



Stahlarmierung anbringen.



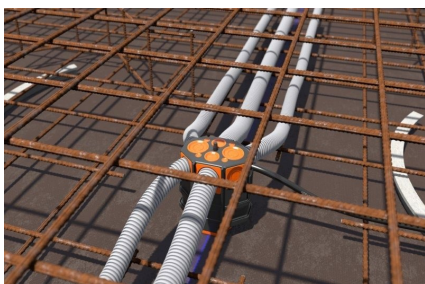
Aufsteckrahmen für flexible Erweiterung und mehr Klemmraum auf Membrandose M1 aufstecken.



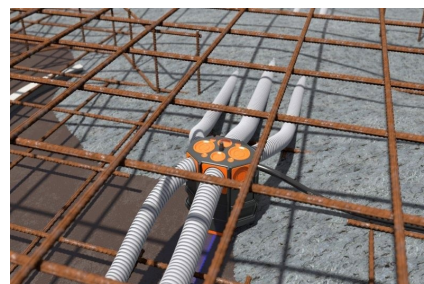
Membrandose aufsetzen.



Open the diaphragm with a cutter knife open and insert tubes and cables.



Werkzeuglose Kombi-Einführung von Kabeln und Rohren M15-M32.



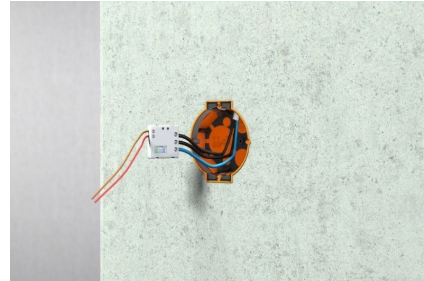
Zweite Stahlarmierung anbringen und betonieren.

Montageanleitung

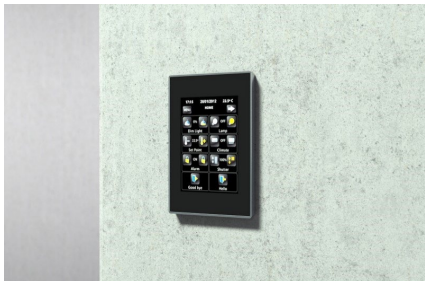
P762 Aufsteckrahmen Membrandose M1



Nach der Betonage kann der Deckel mit einem einfachen Hammerschlag geöffnet werden.



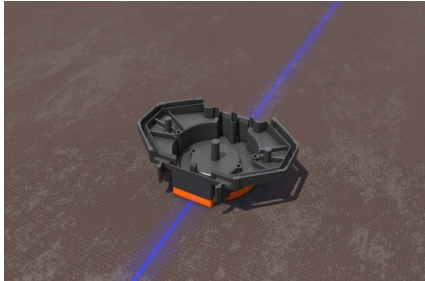
Durch 8-eckige Bauform als Elektronikdose verwendbar.



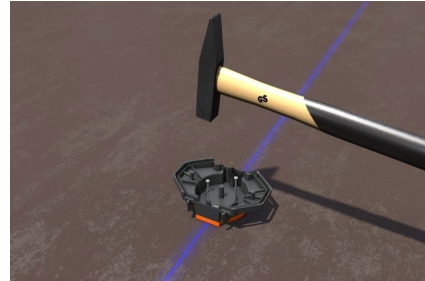
Fertige Installation.

Assembly instruction

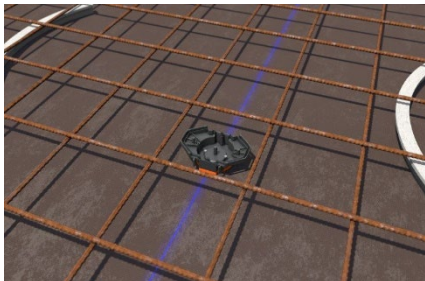
P762 Push-on frame for membrane box



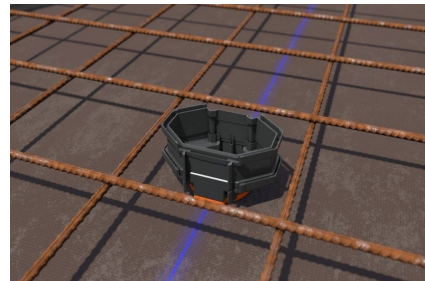
Fasten the front part to the formwork with nails.



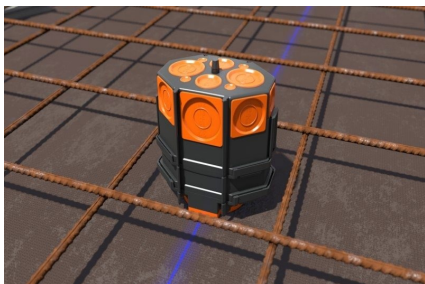
Integrated nail fixation in the lid enables easy assembly.



Attach steel reinforcement



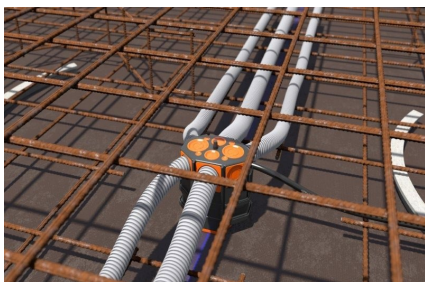
Plug-on frame for flexible expansion and more clamping space onto membrane box M1.



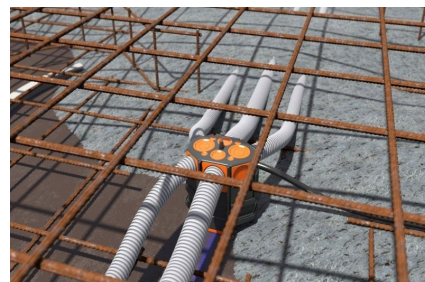
Put on the membrane can.



Drill out holes for installation pipes M32 with a step drill.



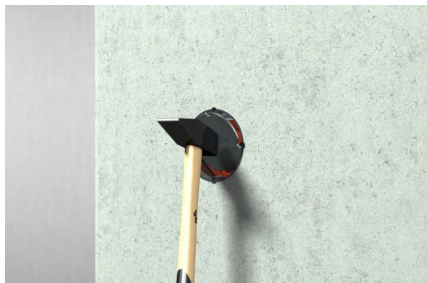
Tool-free combined insertion of cables and tubes M15-M32



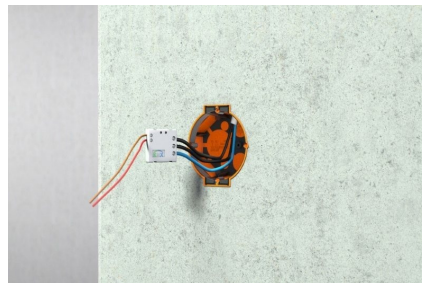
Attach second steel reinforcement and pour concrete.

Assembly instruction

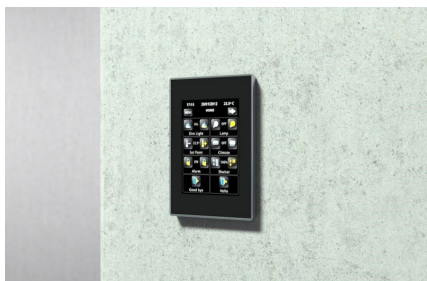
P762 Push-on frame for membrane box



After concreting, the cover can be opened with a simple hammer blow.



Can be used as an electronics box due to its 8-cornered design.



Finished installation.