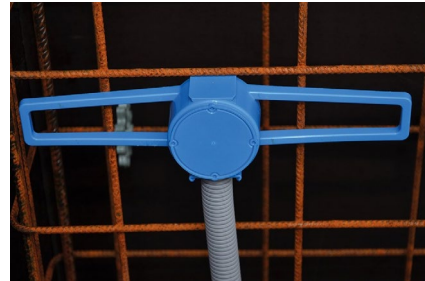
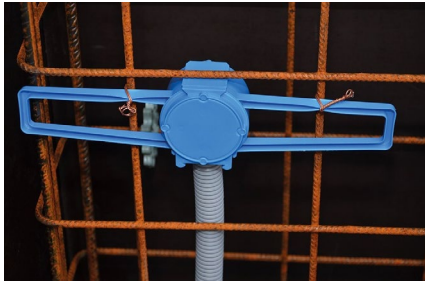
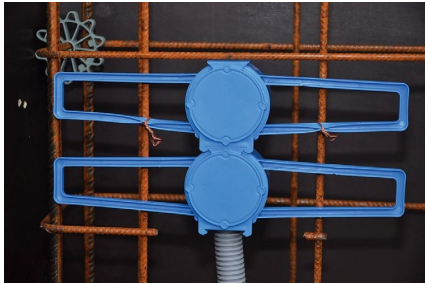


Montageanleitung

P588 Flügelbetondose flach



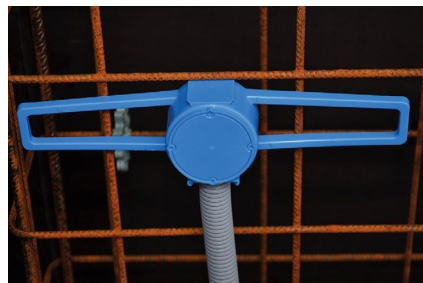
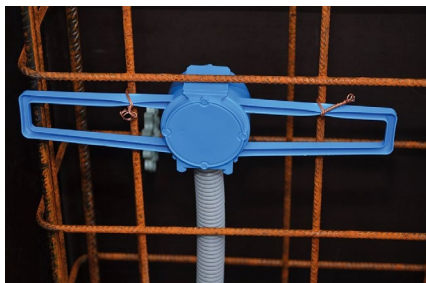
Rohr einführen und einfach auf die
Stahlarmierung binden.



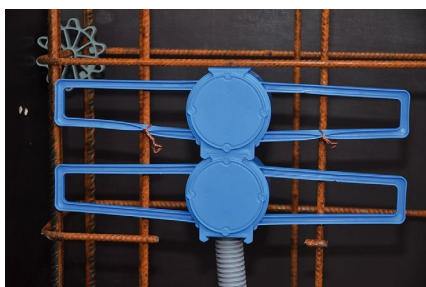
Für mehr als 20 mm Betondeckung die
Dose einfach umdrehen..

Assembly instruction

P588 Wing concrete box flat



Insert the pipe and simply tie it to the steel reinforcement.



For more than 20 mm concrete cover, simply turn the can upside down.