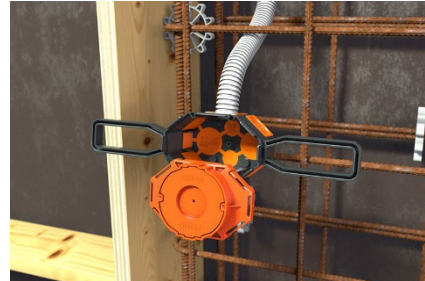


Montageanleitung

P953 Membrandose M1 CEE



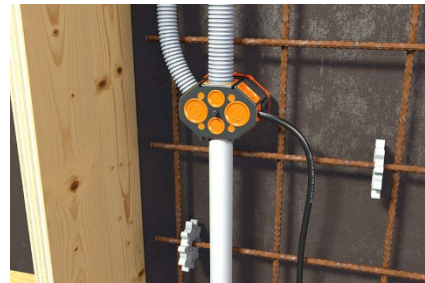
Variante 1: Frontteil auf Schalung nageln. Die integrierte Nagelfixierung im Frontteil ermöglicht eine einfache Montage.



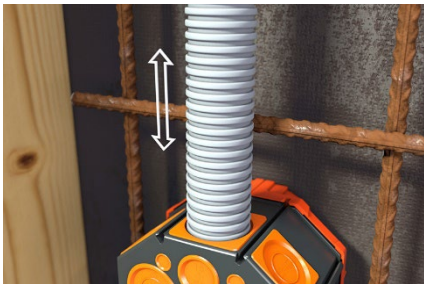
Variante 2: Aufsteckbare Flügel auf Membrandose stecken und mit Draht an Stahlarmierung befestigen.



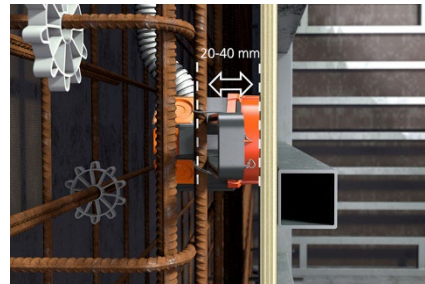
Membrane mit einem Cuttermesser öffnen. Großrohereinführung M32.



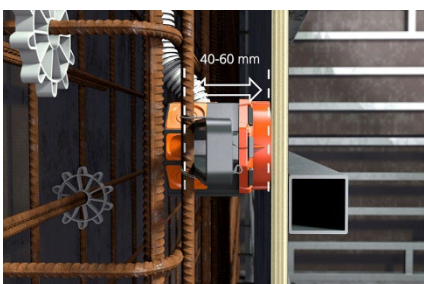
Kabel oder (starre) Rohre M20, M25 und M32 einführen.



Sichere Zugentlastung durch Rohrgrip - kein Kürzen der Rohre erforderlich.



Flexible Flügel passen sich der jeweiligen Betondeckung von 20-40mm...



... oder 40-60mm an.



Einfaches Öffnen durch Hammerschlag.

Montageanleitung

P953 Membrandose M1 CEE



Dichtung verhindert das Eindringen von Feuchtigkeit.



Leichte Installation von CEE Unterputzsteckdosen.



Fertige Installation.

Assembly instruction

P953 Membrane box M1 CEE



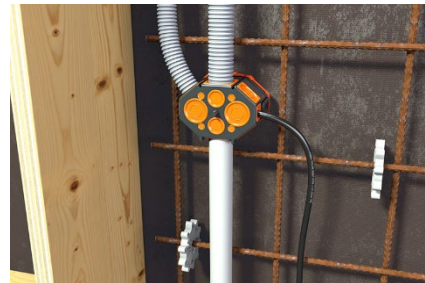
Variant 1: Nailing the front part to the formwork. The integrated nail fixation in the front part enables easy assembly.



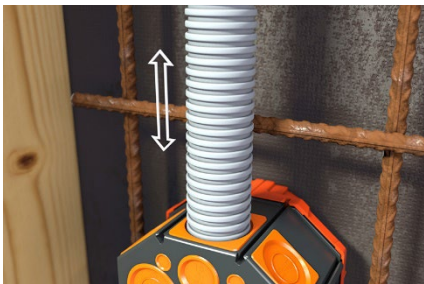
Variant 2: Attach wings to membrane box and attach with wire to steel reinforcement.



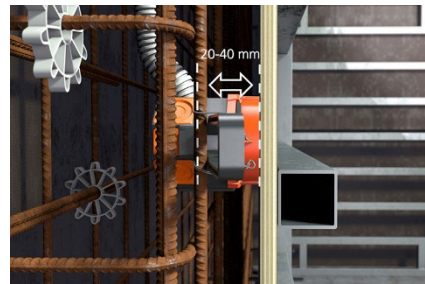
Open the membrane with a cutter knife. Large-diameter conduit entry M32.



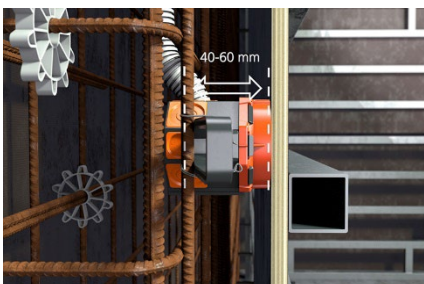
Insert cables or (rigid) conduits M20, M25 and M32.



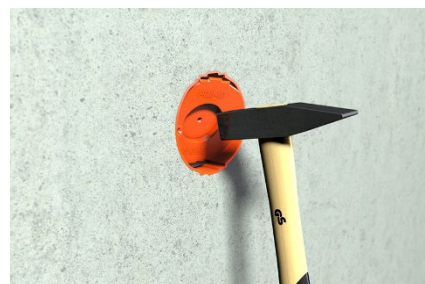
Safe strain relief due to conduit grip - no shortening of the conduits required.



Flexible wings adapt to the respective concrete cover of 20-40mm...



... or 40-60 mm.



Easy opening by hammer blow.

Assembly instruction

P953 Membrane box M1 CEE



Seal prevents the entry of moisture.



Easy installation of CEE flush-mounted sockets.



Finished installation.