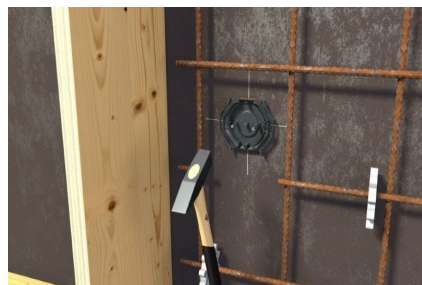


Montageanleitung

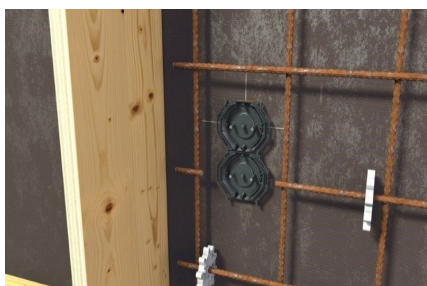
P913 Membrandose M3 35



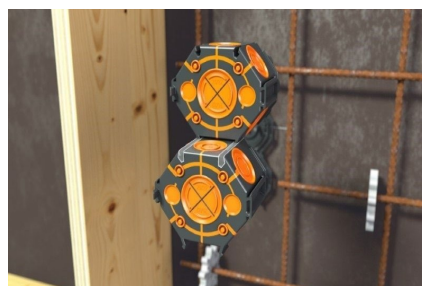
Deckel mit 35 mm Einbauöffnung.



Positionsgenaueres Ausrichten durch integrierte Markierungen am Deckel. Integrierte Nagelfixierung im Deckel ermöglicht eine einfache Montage.



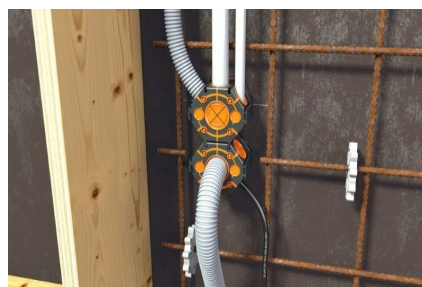
Stabiles Aneinanderreihen weiterer Deckel im Kombinationsabstand von 71 mm.



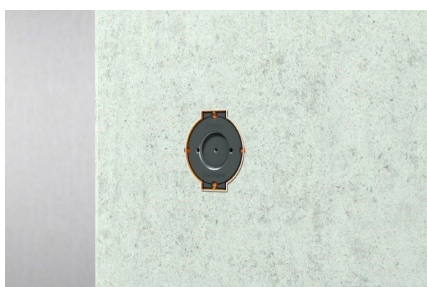
SCS-Verbindungstechnik - feste Verbindung und einfache Durchverdrahtung.



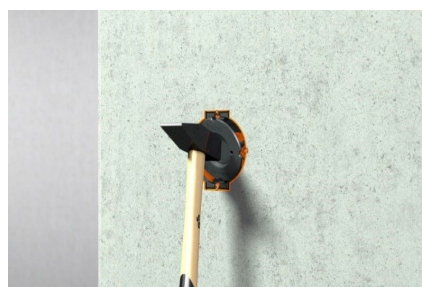
Membrane mit einem Cuttermesser öffnen.



Werkzeuglose Kombi-Einführung von Kabeln und Rohren M15-M32. Absolut betondichte Einführungen durch Membrantechnik.



Montage nach der Betonage: Durch Membrandichtlippe ideal für Sichtbeton geeignet.



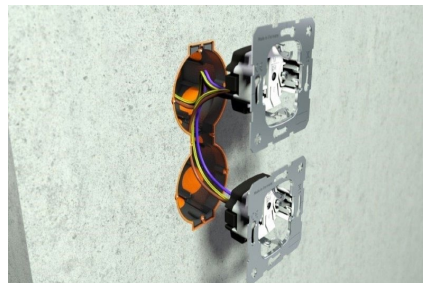
Einfaches Öffnen des Deckels durch einen Hammerschlag.

Montageanleitung

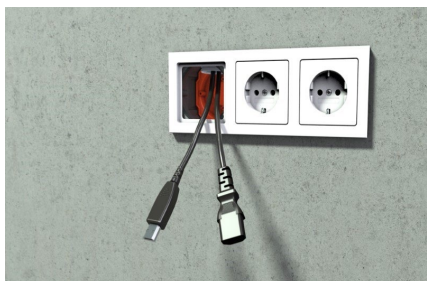
P913 Membradose M3 60



Bei Bedarf kann der SCS-Verbindungssteg ausgebrochen werden.



Einfache Installation von vorverdrahteten Geräten möglich.



Vorkonfektionierte Leitungen durch Großroheinführung M32 installierbar.

Assembly instruction

P913 Membrane box M3 35



Cover with 35 mm installation opening.



Precise positioning due to integrated markings on the lid. Integrated nail fixation in the lid enables easy assembly.



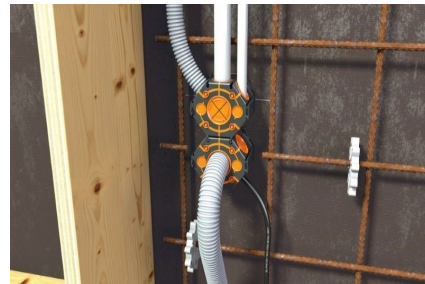
Stable stringing together of further lids at a combination distance of 71 mm.



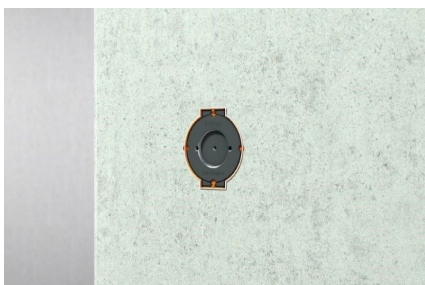
SCS connection technology - fixed connection and simple through-wiring.



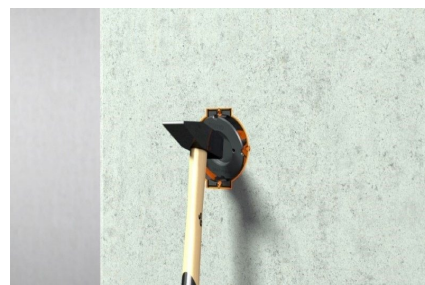
Open the diaphragm with a cutter knife.



Tool-free combined cable and pipe entry M15-M32. Absolutely concrete-tight entries due to membrane technology.



Installation after concreting: Ideally suited for exposed concrete due to membrane sealing lip.



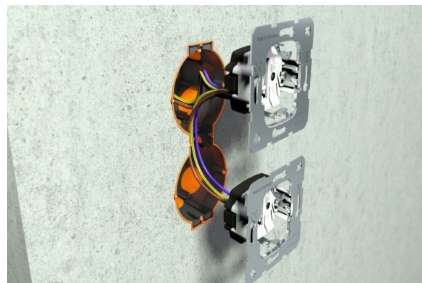
Easy opening of the lid with a hammer Blow.

Assembly instruction

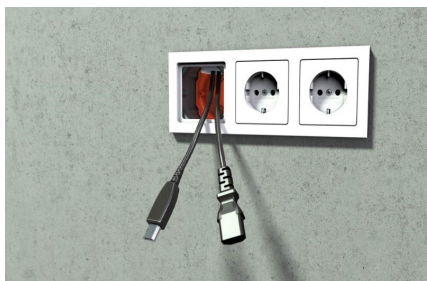
P913 Membrane box M3 60



If necessary, the SCS connecting bar can be broken out.



Easy installation of pre-wired devices possible.



Pre-assembled cables can be installed by large-diameter pipe insertion M32.